



DRAFTING INTRO

How Sketching and Drawing
Are Used In the Design Process

DRAWINGS

- ♦ Can be made FREEHAND or with INSTRUMENTS such as rulers or compasses
- ♦ FREEHAND sketch > rough draft
- ♦ INSTRUMENT drawing > final draft

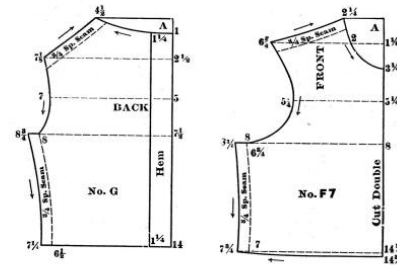
Freehand Drawing



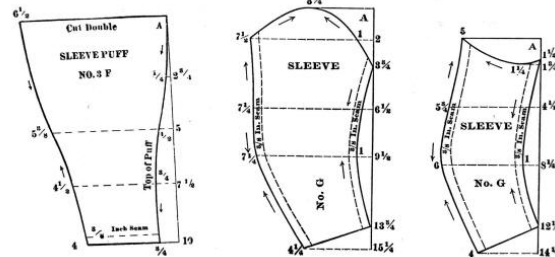
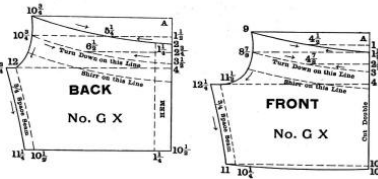
Instrument Drawing



MISSSES' EMPIRE GOWN.



Use the scale corresponding with the Bust measure to draft the entire garment, which consists of Front, Back and two Shirred portions, two Sleeve portions and Puff. Turn down the shirred portions and pleat on third line. Sew to the waist. Gather the bottom also. The Skirt is simply a straight piece of goods the length and width desired. Gather at the top and sew to the waist. Finish with a wide folded belt, which may fasten in the back or may be with a large bow and long ends.





DRAWING TYPES

- ◆ Pictorial drawings
- ◆ View drawings
- ◆ Schematic drawings
- ◆ Development drawings



Pictorial Drawings

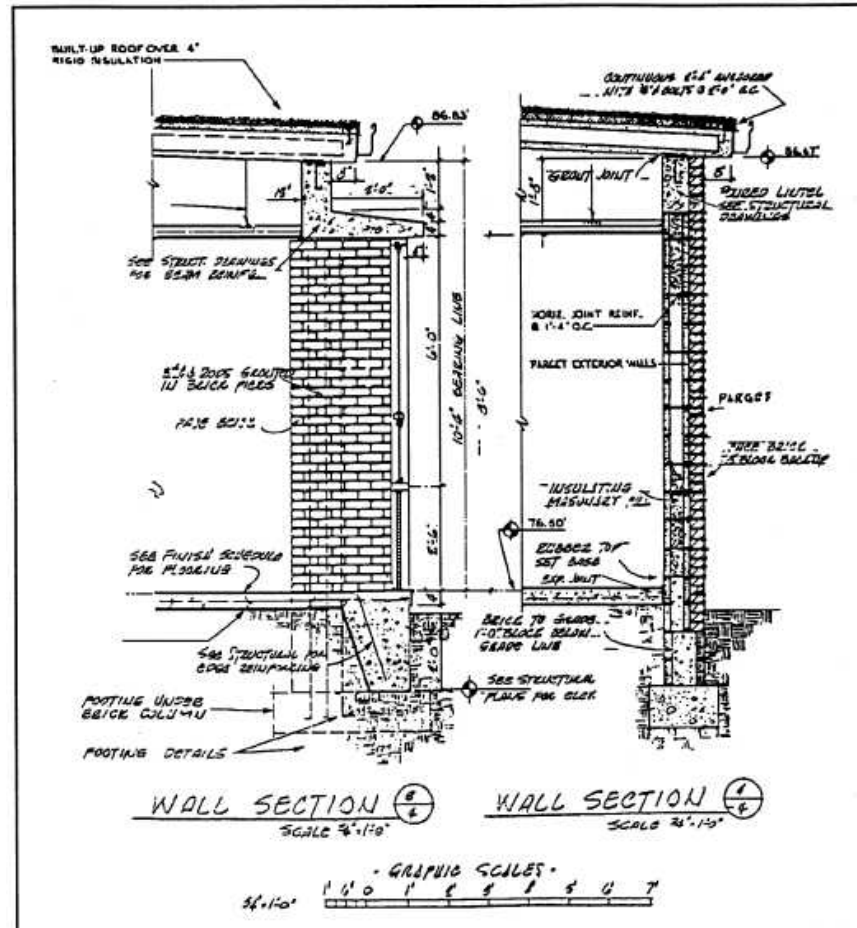


- ◆ Resemble a photograph
- ◆ Realistic
- ◆ Show finished product
- ◆ Oblique, isometric, or perspective types

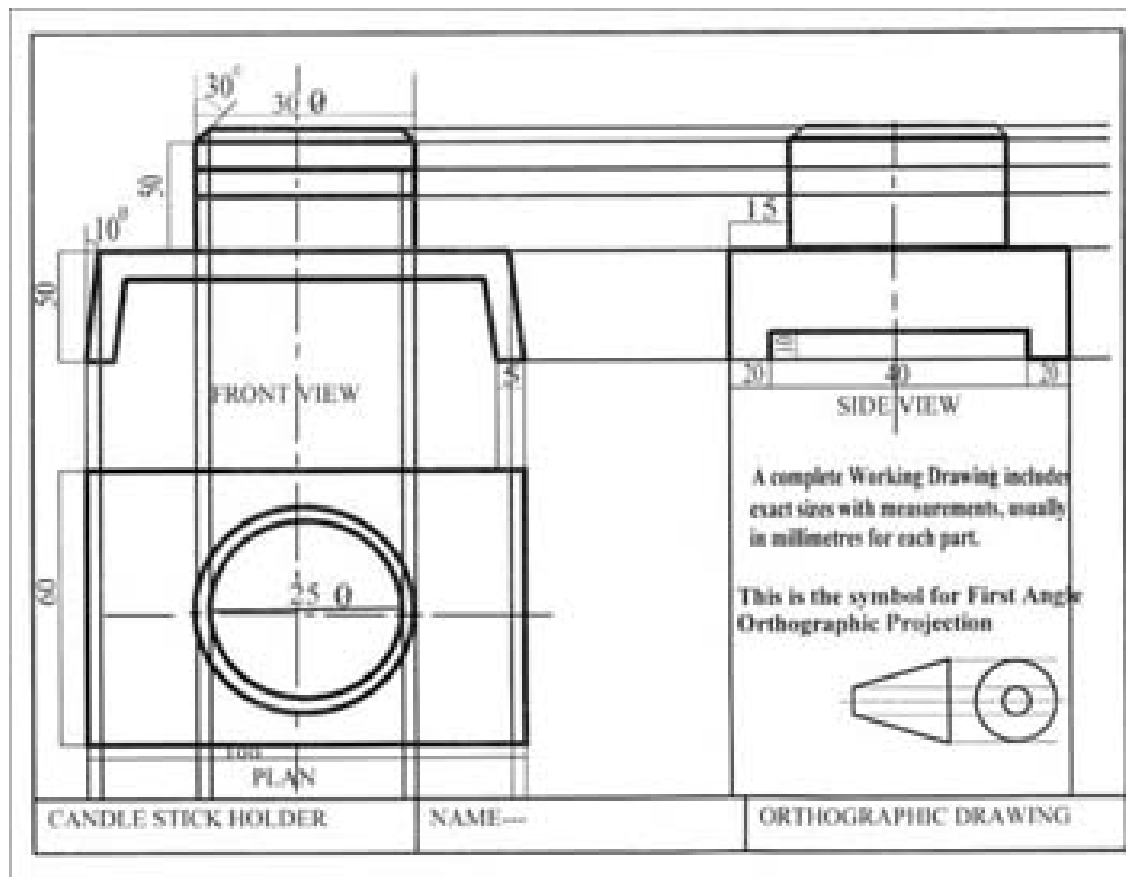
View Drawings

- ◆ Box view concept
- ◆ Front, top, side, back views
- ◆ Extra close-up detail views where design specifics are key
- ◆ ORTHOGRAPHIC PROJECTION
- ◆ No distortion
- ◆ Industry standard – working drawings

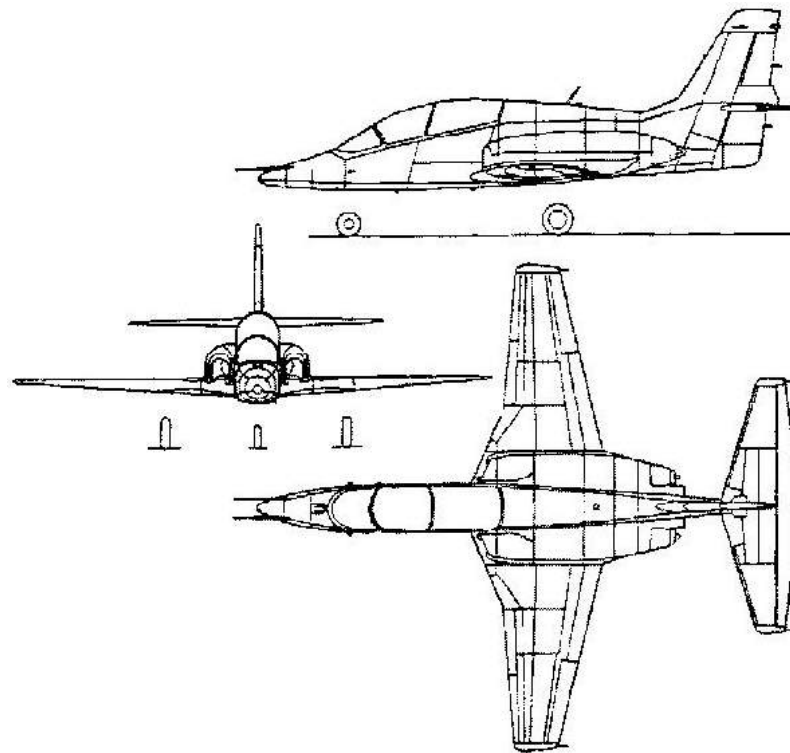
View Drawing



View Drawing



View Drawing





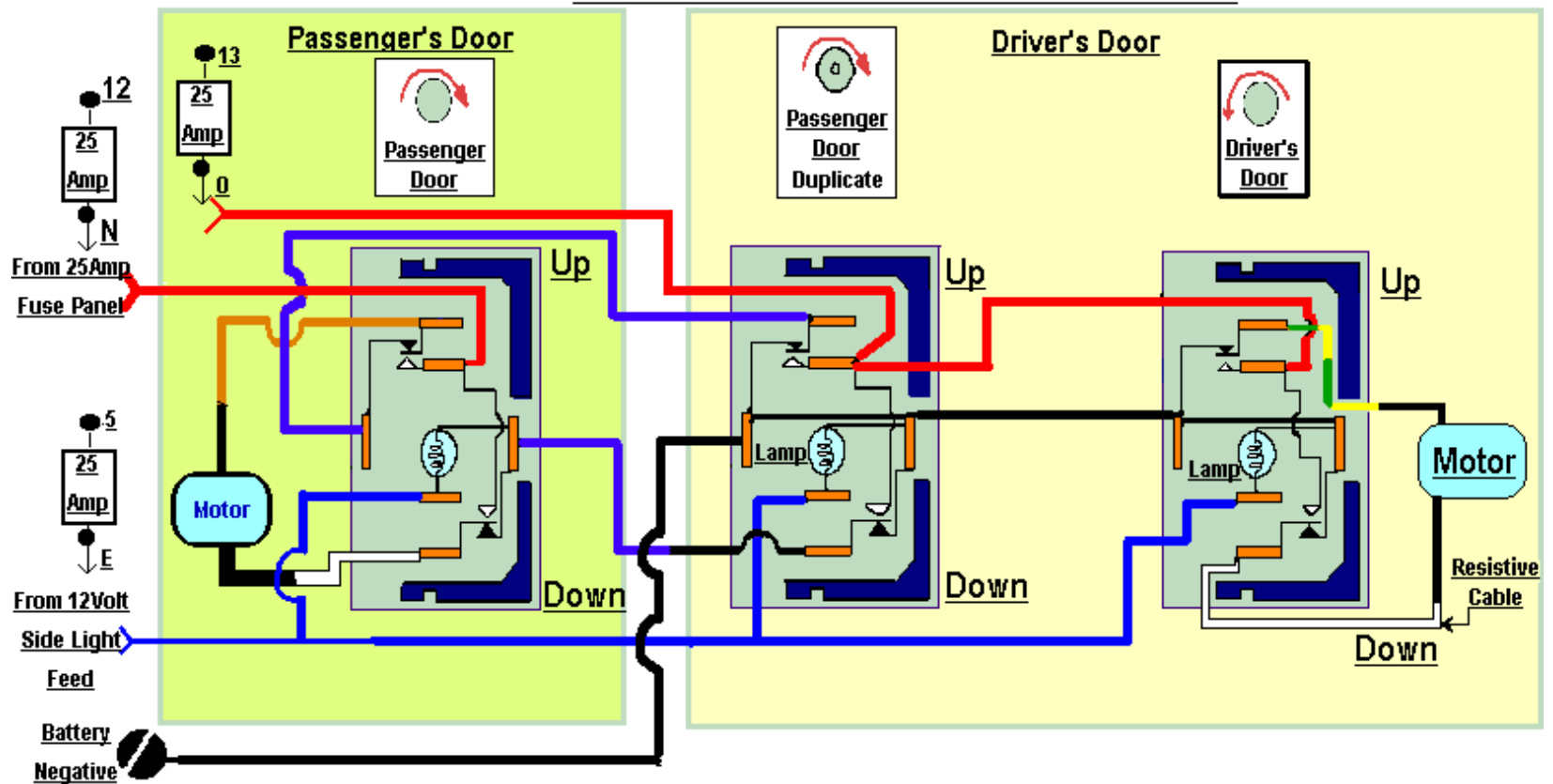
Schematic



- ◆ Symbols and lines used to show the arrangement and relationship of parts

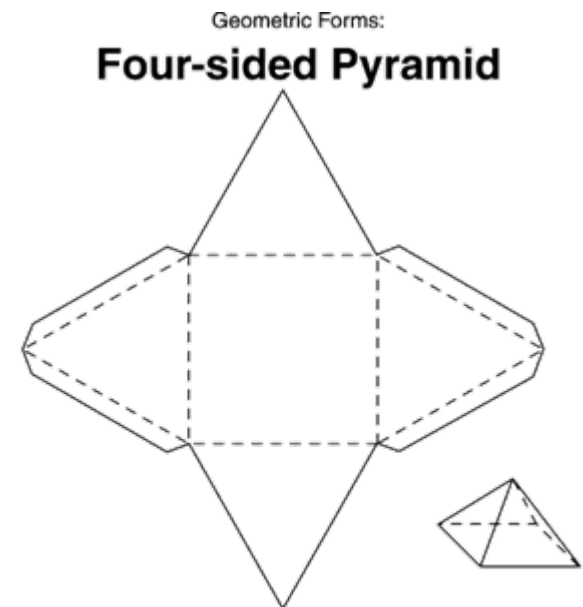
Schematic

Electric Window Switches and cables attached



Development Drawing

- ◆ A pattern required to make a 3d object as a prototype to assist in further DEVELOPMENT



1. Trace this shape on your paper. You can print this pattern.
2. Cut out the shape along the solid lines.
3. Fold all the dotted lines.
4. Bring the pyramid together
5. Glue or tape tabs to pyramid walls.
6. Now you've made a four-sided pyramid!

DRAFTING TOOLS

- ◆ Pencil, eraser, paper
- ◆ Instruments like, T-square, ruler, protractor
- ◆ Practice

